

# THE ADVENTURE - 2022

## FEBRUARY

### ADVENT LUTHERAN CHURCH

#### OUR MISSION – FAITHFUL IN THE WORD

- + To **gather** as God's people and nurture one another
- + To **know** the Word of God
- + To **grow** in faith, love, and service
- + To **go** into the world with the Good News of Jesus Christ



Rev. Matthew E. Ollikainen, Pastor  
45 Worthington Mill Road  
P. O. Box 840, Richboro, PA 18954  
215-355-2529  
web: [www.adventrichboro.org](http://www.adventrichboro.org)  
e-mail: [office@adventrichboro.org](mailto:office@adventrichboro.org)



Advent Evangelical Lutheran Church continues to worship indoors and online. Thank God that the increased COVID infections rate, due to the Omnicron variant we saw in December and January, has been subsiding. As of the writing of this newsletter it appears that we will be able to resume communion and sing in worship for the month of February. It also appears that we will be able to resume our ministries. Please watch for communications from our ministry leaders regarding the Men's Breakfast, Ping Pong, Fellowship, Stitch Club and Sunday Bible Study should there be changes. As stated almost every month, the pandemic is unpredictable. It is hoped that we have seen the last spike in infection. But please be aware, should there be another spike in infection, we may need to adopt great COVID precautions again.

As we ease up COVID precautions for worship and our ministries, these precautions continue:

- Strongly encouraged mask wearing regardless of vaccination status
- Social distancing
- Sanitizing hands and objects handled
- Staying home if you have any symptoms of illness or have been in close contact with anyone with COVID.
- The availability of online worship and the use of zoom for meetings.

Our leadership will continue to gauge the situation week by week and will keep the congregation informed of any adjustment to our precautions as needed.

#### **FEBRUARY 6** **5<sup>TH</sup> SUNDAY AFTER EPIPHANY**

- 8:00 a.m. Traditional Holy Communion
- 9:00 a.m. Adult Bible Study
- 9:30 a.m. Contemporary Holy Communion
- 10:30 a.m. Fellowship Time: Jeanne Gryszka
- 10:45 a.m. Adult Bible Study

#### **FEBRUARY 13** **6<sup>TH</sup> SUNDAY AFTER EPIPHANY**

- Souper Bowl of Caring**
- 8:00 a.m. Traditional Holy Communion
- 9:00 a.m. Adult Bible Study
- 9:30 a.m. Contemporary Holy Communion
- 10:30 a.m. Fellowship Time: Gail Oines
- 10:45 a.m. Church Council Meeting

**FEBRUARY 20**

**7<sup>TH</sup> SUNDAY AFTER EPIPHANY**

8:00 a.m. Traditional Holy Communion  
9:00 a.m. Adult Bible Study  
9:30 a.m. Contemporary Holy Communion  
10:30 a.m. Fellowship Time: Open  
10:45 a.m. Adult Bible Study  
6:30 p.m. Sunday School Zoom Class

**FEBRUARY 27**

**8<sup>TH</sup> SUNDAY AFTER EPIPHANY/  
TRANSFIGURATION OF OUR LORD**

8:00 a.m. No service - 1 service 9:00 a.m.  
9:00 a.m. Blended Holy Communion  
10:00 a.m. Annual Congregational  
Meeting - in person and on Zoom  
Zoom access information page 5  
6:30 p.m. Sunday School Zoom Class

Sunday services may also be attended by **Zoom** and will be live streamed on **Facebook**. A recording of the services will be uploaded to **YouTube** and linked to our website immediately after the service concludes.

**YouTube:** Click on the church website link after **12:00 p.m.** Sunday

morning: <https://www.adventrichboro.org/>

**Facebook:** Go to the church Facebook page: <https://www.facebook.com/adventrichboropa/>

**Zoom:**

Smart device/Computer instructions- Click on this link for Traditional Worship at 8:00 a.m.

Click on this link for Contemporary Worship at 9:30 a.m.

**The full zoom invitations are pasted below:**

Phone instructions: Call 1-646-558-8656

While using Zoom, please mute yourself when you are not speaking.

Scheduled Zoom meetings: Topic: **Advent Lutheran Church Traditional Holy Communion**

Time: This is a recurring meeting Meet anytime

Join Zoom Meeting

<https://us02web.zoom.us/j/89195039877?pwd=dnVRTIRGamJQVXNZbENlVDJTT0pnUT09>

**8:00 A.M. Meeting ID: 891 9503 9877      Passcode: 443533**

Scheduled Zoom meetings: Topic: **Advent Lutheran Church Traditional Holy Communion**

Time: This is a recurring meeting Meet anytime

Join Zoom Meeting

<https://us02web.zoom.us/j/85405629972?pwd=aGErSFNlbVAvNmZsQkIzWVpTTktlQT09>

**9:30 A.M. Meeting ID: 854 0562 9972      Passcode: 506714**

Scheduled Zoom meetings: Topic: **Advent Lutheran Church Contemporary Holy Communion**



## PASTOR MATT'S THOUGHTS FOR FEBRUARY, 2022

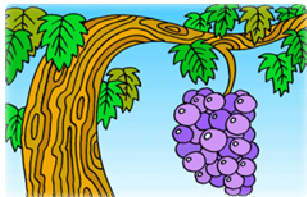
In November a woman visited Advent during Sunday worship. She was homeless living out of her mini-van and was having car trouble. We allowed her to stay in our parking lot three nights as we sought to repair her vehicle. On that Tuesday Millevoi Brothers' garage fixed her vehicle free of charge. Our visitor left to continue her journey Wednesday morning. This congregation made me proud. We greeted her with kindness and compassion. Folks did an ad-hoc collection of cash to assist her Sunday morning. We had members who checked in on our visitor regularly. We allowed her use the facilities at the church. Members provided her a warm dinner on the nights she was with us. Thank you to our numerous members who showed concern and prayed for our visitor. So often in our society the dignity of homeless is not respected even by those who offer help. I am absolutely proud of how this congregation responded to our visitor as a fellow Child of God with great compassion and generosity.

This occasion lifted to the awareness of our congregation a vital ministry churches occasionally provide to those in immediate need. Our visitor in November came on a Sunday during worship, but she is not the first person to come to our doors seeking help since I have been at Advent. In fact, folks seeking help have come to every church I have served throughout the years. (Most of the time when folks came seeking help I treat the situation confidentially, especially if the person is a church member and requests that I do as such.) Sometimes the situation requires financial help. The van of our visitor in November was thankfully fixed for free, but at the time I was in discussion with our leadership about if and how much we would pay for a repair. This is where a pastoral discretionary fund is a useful ministry of the congregation. Over the years at the churches I have served, I have used a pastoral discretionary fund to feed the hungry, help folks with the rent, keep the heat and electricity on, get the stranded home, provides the destitute with legal help and puts diapers on babies. There are always social services in the area to which I make recommendations, but these services deal with high demand, limited resources and often have restrictions that keep them from helping all situations. Most social services are set up to provide long term aid and solutions, but are often are unable to address emergencies. I always try to coordinate the help I provide with the help and resources in the broader community. A pastoral discretionary fund can bridge the gap between immediate need and long term help and solutions, where folks would otherwise slip through the cracks.

In the past there was a pastoral discretionary fund at Advent referred to as "Advent Aid". If I am not mistaken based on what I have been able to learn, Advent Aid was in place primarily to help members of Advent. Church Council and I feel that it is important that we reintroduce Advent Aid to the congregation with the emphasis of helping anyone in need, member or non-member. There are some funds in Advent Aid from past years, but for Advent Aid to be effective it needs more. Please give consideration to giving to Advent Aid. It will enable us to do an important ministry in the community.

You may never actually see this ministry happen because it is usually done confidentially, but you need to know that this ministry can not happen without your help. With your help, I would like to never have to turn away anyone in great need. That someone maybe a stranger, a person you unwittingly know or maybe, though I would never wish it on anyone, you yourself some day. Multipurpose envelopes can be found in the rack on back of the pews at church. Provide your envelope number, specify **Advent Aid** and your offering will count on your giving statement. You can also give online at the church website. Thank you and may God's blessings be with you.

**God's Peace be with you,  
Pastor Matt**



## Bible Lesson for Kids

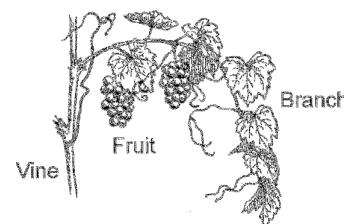
### Stay Connected To Jesus!

**“I am the vine; you are the branches.  
If you remain in me and I in you, you will bear much fruit;  
apart from me you can do nothing.”**

**John 15:5**

Jesus taught his followers about God’s love for them. He talked about the grapevines that grew nearby. Each grapevine needed care to produce wonderful fruit. To give energy to the fruit, the grower would cut some branches off of the vine, leaving strong branches for the grapes to grow. God wants us to be like those strong branches, showing others the love he has shared with us. Without God, we would be cut away and wither.

Even today at vineyards, we see that each vine is carefully pruned to send nourishment from the vine through the branches to heavy bunches of grapes, which taste sweeter by harvest time. As we stay “on the vine” and get our strength from Jesus, we feel his joy as we honor God.



As we remain in Jesus—stay connected to him—he can do great things through us. With Jesus as the vine while we are the branches, what kind of fruit will we produce? We will spread the joy of knowing that God loves us and we will share the good news that our sins are forgiven through Jesus. Share God’s love!

### **SUNDAY SCHOOL ZOOM IN FEBRUARY**



In February, Sunday School will meet on **zoom** on the **3rd and 4th Sundays**. New students are welcome! Pastor Matt and the Sunday School teachers guide us through the Bible lessons. Let us know if you’d like to join us and we’ll order student books and crafts for you!

Our fun curriculum is called ***Holy Moly***. The lessons are written in rhyme, the illustrations are graphic novel style and the short videos bring the Bible stories to life!

Please contact the church office to register or with any questions: [office@adventrichboro.org](mailto:office@adventrichboro.org) or 215-355-2529. We’ll see you soon on zoom! - Jeanne Gryszka, Sunday School Director

Topic: Advent Lutheran Sunday School  
Time: This is a recurring meeting Meet anytime  
Join Zoom Meeting

<https://us02web.zoom.us/j/88465369380?pwd=dldlcldteUhuV05UdENJSnZrZktndz09>

Meeting ID: 884 6536 9380

Passcode: 306287

	SUNDAY	SCHOOL
February	20	6:30 p.m.
	27	“

**A picture to color, page 10**

## INSTALLATION OF LEADERS IN THE CONGREGATION ON JANUARY 16

The following people have been *elected* [by the congregation] to positions of leadership. We give thanks for their willingness to serve. In baptism we are welcomed into the body of Christ and sent to share in the mission of God; we rejoice now that these *sisters and brothers* will lead us in our common life and our mutual mission as a congregation.

Pastor, Rev. Matthew Ollikainen  
President, George Henry  
Vice President, Bob Matlack  
Financial Secretary, Cindy Frey  
Treasurer, Nancy Hill  
Secretary, Jennifer McQuiggan  
Christian Education – vacant

Congregational Life - vacant  
Evangelism, Bob Matlack  
Finance/Stewardship, Tony Gryszka  
Property, Lynn Roccograndi  
Social Ministry, Nancy Sclight  
Youth – vacant  
Worship and Music, Gail Oines

We currently have three vacancies on Church Council. If you're interested in filling one of the positions, please contact Pastor Matt, George Henry, or Tony Gryszka. Thank you.



### EVANGELISM

February is the "love" month. How can we as Christians share that love with others? It is easy to share love with your family and close friends. What about neighbors? Strangers? Those you see in the store or at work?

Stop and say hello. If you know them by name, use it. Humans react when they hear their name spoken. Ask them how they are doing. Ask if there are any concerns or needs for prayer. You don't have to stop and pray right there, but if you are prompted by the Holy Spirit - do it! Otherwise you can offer their needs up in prayer later at home or in church. And if it is something critical, please be sure to let me know so I can put their needs on our prayer chain. God is Love. Our duty is to share that with the world.

Karen Matlack, kmatl22349@verizon.net



### SOCIAL MINISTRY

As the New Year begins, the work of our local Food Bank continues. It is not unusual for us to serve 10 or more families each day that the Bank is open. The local churches in Bucks County are the backbone that keeps us going! Please consider donating whatever you can each month either on days that the church office is open or you can deposit your bags in the bench outside the main entrance anytime. For suggestions on which items are requested each week, go to [www.warminsterfoodbank.org](http://www.warminsterfoodbank.org).

Thank-you for your continued support of this important mission.

Nancy Sclight, Social Ministry



### 2022 ANNUAL CONGREGATIONAL MEETING

On Sunday February 27 Advent will have **one worship service at 9:00 a.m.** followed by our Annual Meeting at 10:00 a.m.. We will review the reports for 2021. We will also choose representatives for Synod Assembly on April 30th. It is important that we have good attendance. Please support your church by attending in person or online by Zoom.

Join Zoom Meeting

<https://zus02web.zoom.us/j/87377732721?pwd=cTNqeHRDUjRGbWhyM2RSNDIEY0Y3QT09>



### **ASH WEDNESDAY SERVICES**

We will be having Ash Wednesday service on Wednesday, **March 2 at Noon and 7:00 p.m.** in person and on line. We will also be having mid week Lenten Services throughout five weeks of Lenten. More information on the mid week services will be include in the March Newsletter.

Noon Ash Wednesday Service

<https://us02web.zoom.us/j/87844300892?pwd=Q3N0RENjL093ZGFFVmhneUtkYS9Ydz09>

7:00p.m. Ash Wednesday Service

<https://us02web.zoom.us/j/88386369457?pwd=cm1yb2dhZTNUOFZkaGtycUpzeVk1dz09>

Ash Wednesday services may also be attended by **Zoom** and will be live streamed on **Facebook**. A recording of the services will be uploaded to **YouTube** and linked to our website immediately after the service concludes.

**YouTube:** Click on the church website link after **1:00 p.m.** on Ash Wednesday for Noon service and 8 p.m. for the 7:00 p.m. service: <https://www.adventrichboro.org/>

**Facebook:** Go to the church Facebook page: <https://www.facebook.com/adventrichboropa/>

**Zoom:**

Smart device/Computer instructions- Click on the links listed above for the Noon Service and 7:00 p.m. Service.

Phone instructions: Call 1-646-558-8656

While using Zoom, please mute yourself when you are not speaking.



### **WEDNESDAY NIGHT BIBLE STUDY**

Weekly Wednesday night bible study at 7:00 p.m. will continue on zoom. Our topic will be Jesus' Parables. If there is a parable that you would be interested in studying, please let me know at [pastor@adventrichboro.org](mailto:pastor@adventrichboro.org) .

Here is the Zoom invitation:

<https://us02web.zoom.us/j/89632518358?pwd=Smg5dm1Ba0VZamZjNG1YMk02MlVvdz09>



### **PING PONG - TUESDAYS AT 6:30 STARTING FEBRUARY 1**

All are welcome to join us for an evening of Ping Pong at the church on Tuesday nights at 6:30 p.m., starting February 1. Contact Ray Heiss or Pastor Matt for additional information.



### **MEN'S BREAKFAST GROUP SATURDAY, FEBRUARY 12**

Hang in there. In spite of the unscheduled delay in our menu selection for 2022, (notice, we did not say new menus) we plan to try again for the first breakfast of the New Year on Saturday, February 12. We serve at 8:30 (AM) but feel free to be early. Coffee is ready by 7:30 a.m. Dave



### **STITCH CLUB SATURDAYS 10:00 A.M.**

Stitch club will start to meet again, starting Saturday, February 5, at **10:00 a.m.** (**weather permitting**). Stitch club is open to all who would like to join. If you like to knit, crochet, or do needlepoint, this is for you!

### **STITCH CLUB ITEMS ARE AVAILABLE THROUGHOUT THE**

Stitch club items are **available throughout the year**. If you need any of the items made by the Stitch Club, i.e., blankets, hats, baby items, please contact Hanna McCollum 215-962-9032 or Jeff Jobes 215-355-4149.

### **“SOUPER BOWL” OF CARING**



On **Sunday, February 13**, Advent will once again take a special collection for Souper Bowl of Caring. All donations will go directly to the food pantry in Warminster. Checks should be made out to Advent Lutheran Church and designated “Souper Bowl of Caring”. Thank you for your support of this worthy cause.

### **OFFERING ENVELOPES**

Offering envelopes for 2022 are available in the Narthex. If you do not have envelopes and would like them, please contact the Financial Secretary, Cindy Frey at 267-205-0713.

### **2022 CALENDARS**

The 2022 Calendars from **Joseph A. Fluehr, III, Funeral Home, Inc.** are here. Calendars are located in the narthex and at the front entrance of the church on the shelf to the right. Please take as many calendars as you need.



### **FILL A TRAY AT MEALTIME**

Look for aluminum trays on the tables in our narthex . . . Take some home to await any meal that has one serving left – or perhaps you’ve made extra food on purpose! Fill the 3 sections, add the foil cover, plus the label and bag that come with the tray. Voila! A meal for a shut-in or a person in need!

Advent has a dedicated freezer for meals and we drop them off at Caring for Friends when our freezer fills up. We continue this effort throughout the year. The impact of your food or monetary donation can be viewed on [caringforfriends.org](http://caringforfriends.org).



### **ALTAR FLOWER DEDICATION**

There are numerous dates available for 2022 to dedicate flowers to beautify the altar each Sunday. Please sign up on the sheet on the table in the narthex with your name and dedication. Two bouquets are available each week. The cost is \$25 per bouquet. In addition to making the altar more beautiful, you take the flowers home after the late service to enjoy during the week. If you have any questions call Cindy Frey 267-205-0713.

## **MISSION SUPPORT FOR 2022**

The sign-up sheets Mission Support dedications for 2022 are in the narthex. The cost to dedicate one bouquet is \$25.00. One week of Mission support is \$25.00. There are many openings available on the Mission Support chart for 2022.



## **NUEVA CREACION LUTHERAN CHURCH**

Please keep Pastor Lyzette Rios Sanchez and our mission congregation Nueva Creación Lutheran Church in your prayers. Your mission support gifts help them to minister in an impoverished area of Philadelphia.



## **THE ARMED FORCES**

Please keep in your prayers all our service men and women and especially those related to our congregation:

Lt. Col. Andrew M Frey, Jr is serving as Senior Weather Officer, NORAD/NORTHCOM stationed at Peterson AFB, Colorado Springs,

US Air Force Major Fred Gouse is a pilot and instructor stationed at Holloman AFB, New Mexico.

US Army Colonel (Ret.) Jeff Williams is serving in Dubai, UAE as a military advisor.

US Army Ranger Liam McKendry, grandson of Pastor Jo stationed in Fort Benning, GA

If there are any errors or omissions, please notify the church office. Thank you.

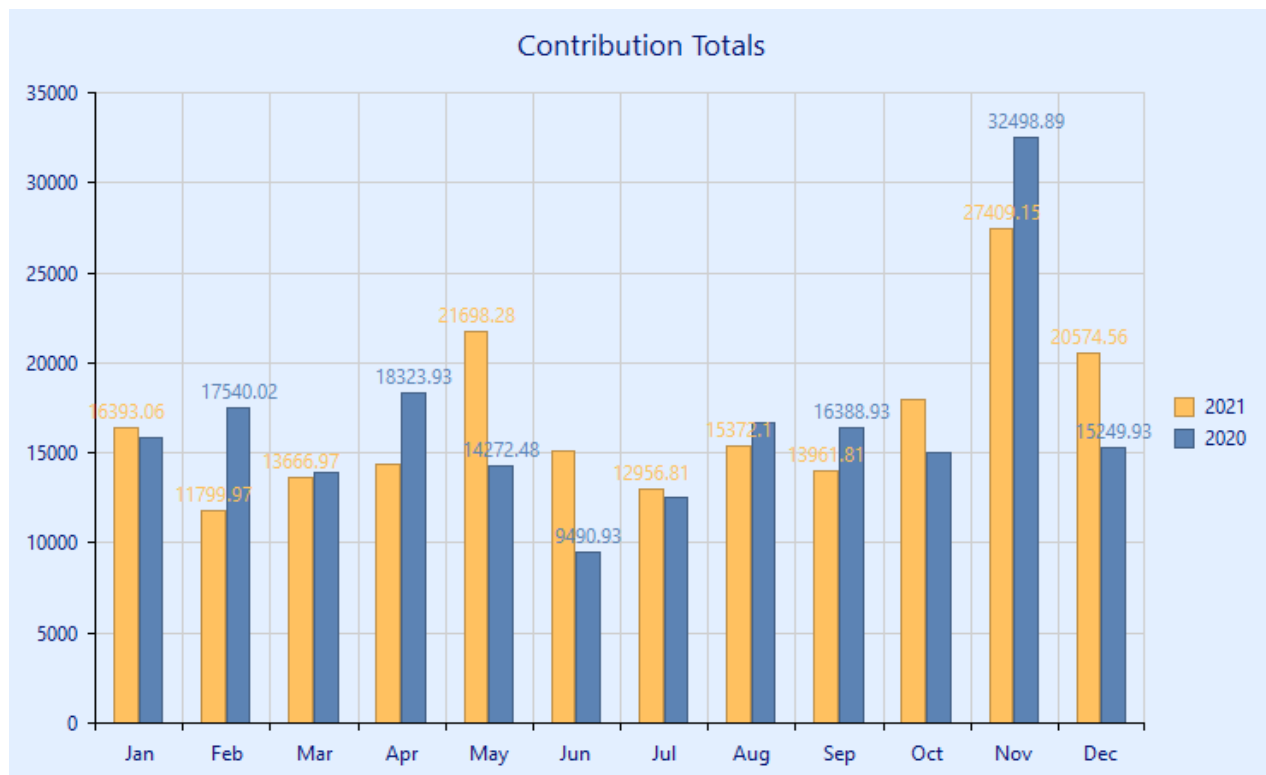
## **FINANCE/TIME AND TALENT REPORT**

Thank you for your continued generosity! Your financial gifts enabled Advent to continue all our ministries throughout the year. For calendar year 2021, all sources of revenue exceeded expenses by \$4,108.

Benevolence offerings were \$8,824, an increase of 57% from year 2020. Your gifts are making a difference in the local community and throughout the world. Many have also been able to donate their time and talents in numerous ways throughout the year. Thank you for keeping Advent in your routine in so many ways! Offerings may be brought to worship services, dropped off in person at the church office (normally Tues-Thurs between 9:00-1:00, please call first), or mailed to P.O. Box 840, Richboro, PA 18954-0840. All offerings are confidential.

Tony Gryska, Finance Committee Chairperson

## **FINANCIAL UPDATE**



### **Income for December 2021**

Benevolence (LWR, Mission Support, etc.)	\$ 520.00
General Fund	\$17,492.06
Mortgage Fund	\$ 2,562.50

Thanks to everyone for your continued financial support of the church this year. We greatly appreciate it. There are numerous ways to continue your offerings.

- Drop off your offering at the church office. The office is usually open on Tuesday, Wednesday and Thursday between 10 AM and 1 PM. Call to confirm hours.
- Mail a check to the church. The mailing address is "Advent Lutheran Church, PO Box 840, Richboro, PA 18954"
- Contribute online at [www.adventrichboro.org](http://www.adventrichboro.org). At the top of the page, click the "Give Now" link to see frequently asked questions. At the bottom of the page click the "Give Now" link for our Giving platform. You may also choose to set up recurring donations or a one-time donation.

Again, thank you for your continued support. If you have any questions concerning your offering please call Cindy Frey, Financial Secretary 267-205-0713

## **SERVING IN WORSHIP - FEBRUARY'S SCHEDULE**

### **WORSHIP ASSISTANTS – 8:00 AM**

2/6 Jeanne Gryszka  
2/13 Dave Shearer  
2/20 Nancy Hill  
2/27 1 service 9:00 a.m.

### **WORSHIP ASSISTANTS – 9:30 A.M.**

2/6 Karen Matlack  
2/13 Gail Oines  
2/20 Jennifer McQuiggan

### **WORSHIP ASSISTANT – 9:00 a.m.**

2/27 John Flint

### **ALTAR GUILD**

8:00 A.M. Hanna McCollum  
9:30 A.M. Karen Matlack, Gail Oines,  
Nancy Slight, Rhona Slawter

### **OUR TECH CREW**

Joel Denis, Mike Dettra, Karen Matlack, Tony  
Gryzka, Gary Zimmerman

### **FLOWER DISTRIBUTION**

Linda Brownlee, Audrey Savchuck, Nancy  
Slight, Rhona Slawter



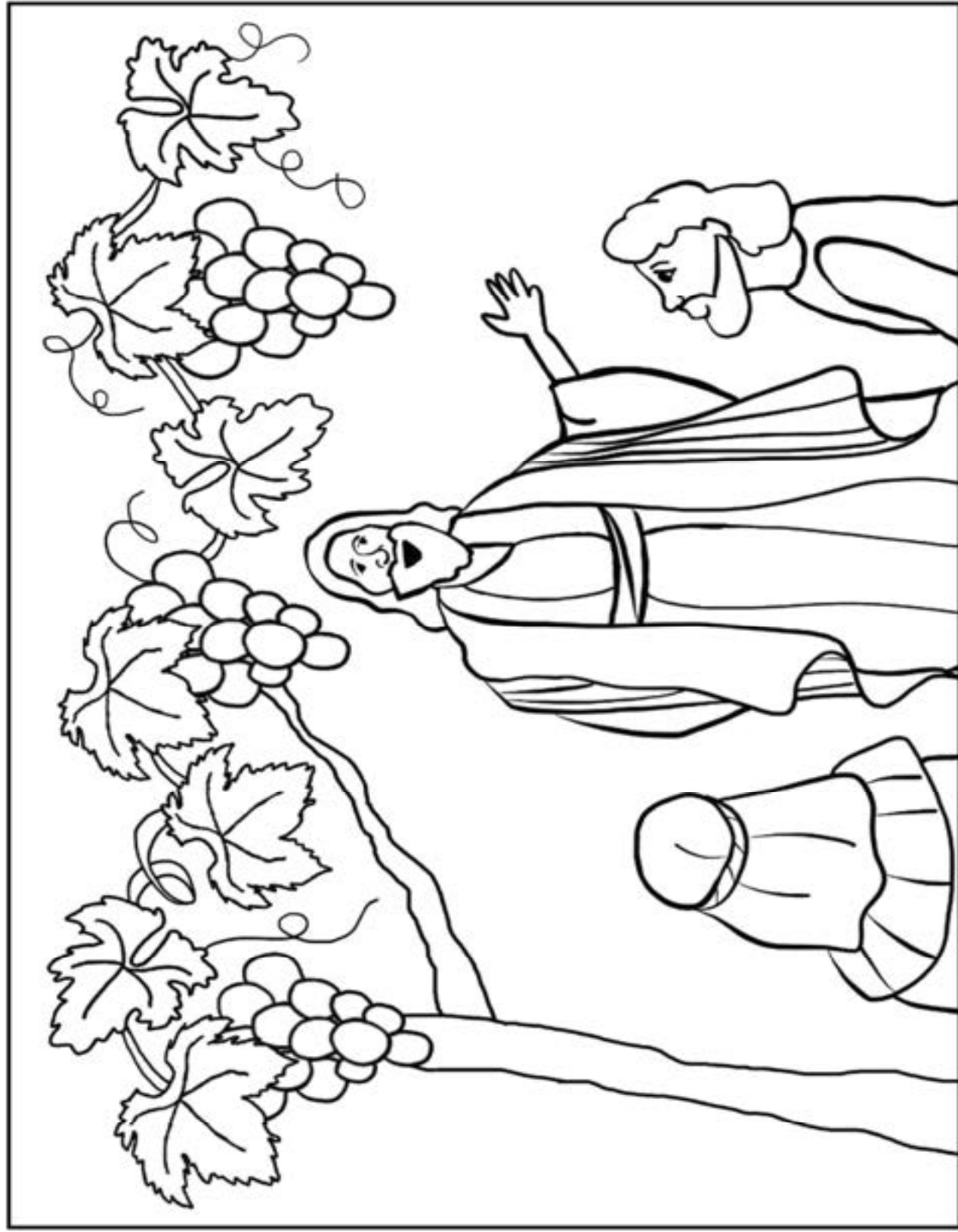
## **ADVENT'S BIRTHDAY CORNER** **FEBRUARY BIRTHDAYS**



5	Mike Sitler	9	Marion Schmidt	18	Julianna Ward
6	Stephanie Morley	13	Nicole Shearer	19	Kali (Frey) Marino
9	David Frost	15	Jacob Duffy	24	Stephen Anderson

Please contact the church office if you or someone you know has been omitted from the list.

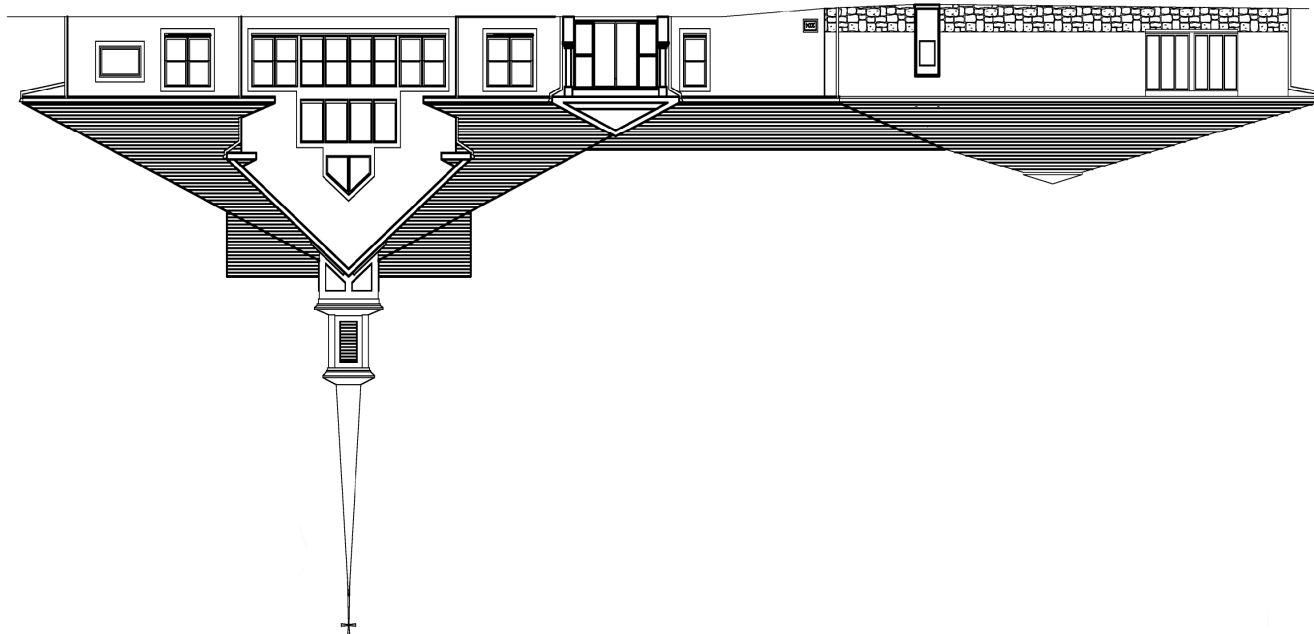
Thank you.



I Am the True Vine

# February

Sunday	Monday	Tuesday	Wednesday	Thursday	Friday	Saturday
		1 6:30 PM Ping Pong	2 7:00 PM Bible Study via Zoom	3	4 7:30 PM A.A. Step Mtg.	5 10:00 AM Stitch Club
6 <u>5<sup>th</sup> Sunday After Epiphany</u> 8:00 AM Traditional Holy Communion 9:00 AM Adult Bible Study 9:30 AM Contemporary Holy Communion 10:30 AM Fellowship Time: Jeanne Gryszka 10:45 AM Adult Bible Study	7 7:30 PM A.A. Open Meeting	8 6:30 PM Ping Pong	9 7:00 PM Bible Study via Zoom	10	11 7:30 PM A.A. Step Mtg.	12 8:30 AM Men's Breakfast 10:00 AM Stitch Club
13 <u>6<sup>th</sup> Sunday After Epiphany</u> <u>Souper Bowl of Caring</u> 8:00 AM Traditional Holy Communion 9:00 AM Adult Bible Study 9:30 AM Traditional Holy Communion 10:30 AM Fellowship Time: Open 10:45 AM Church Council Meeting	14 7:30 PM A.A. Open Meeting	15 6:30 PM Ping Pong	16 7:00 PM Bible Study via Zoom	17	18 7:30 PM A.A. Step Mtg.	19 10:00 AM Stitch Club
20 <u>7<sup>th</sup> Sunday After Epiphany</u> 8:00 AM Traditional Holy Communion 9:00 AM Adult Bible Study 9:30 AM Contemporary Holy Communion 10:30 AM Fellowship Time: Open 10:45 AM Adult Bible Study 6:30 PM Sunday School Class via Zoom	21 7:30 PM A.A. Open Meeting	22 6:30 PM Ping Pong	23 7:00 PM Bible Study via Zoom	24	25 7:30 PM A.A. Step Mtg.	26 10:00 AM Stitch Club
27 <u>Transfiguration of our Lord</u> 9:00 AM Blended Holy Communion 10:00 AM ANNUAL CONGREGATIONAL MEETING 6:30 PM Sunday School Class via Zoom	28 7:30 PM A.A. Open Meeting					



*Advent Evangelical Lutheran Church*

45 Worthington Mill Rd.

P.O. Box 840

Richboro, PA18954-0840

Address Service Requested

# THE ADVENTURE - 2022

## FEBRUARY

### ADVENT LUTHERAN CHURCH

#### OUR MISSION – FAITHFUL IN THE WORD

- + To **gather** as God's people and nurture one another
- + To **know** the Word of God
- + To **grow** in faith, love, and service
- + To **go** into the world with the Good News of Jesus Christ



Rev. Matthew E. Ollikainen, Pastor  
45 Worthington Mill Road  
P. O. Box 840, Richboro, PA 18954  
215-355-2529  
web: [www.adventrichboro.org](http://www.adventrichboro.org)  
e-mail: [office@adventrichboro.org](mailto:office@adventrichboro.org)



Advent Evangelical Lutheran Church continues to worship indoors and online. Thank God that the increased COVID infections rate, due to the Omnicron variant we saw in December and January, has been subsiding. As of the writing of this newsletter it appears that we will be able to resume communion and sing in worship for the month of February. It also appears that we will be able to resume our ministries. Please watch for communications from our ministry leaders regarding the Men's Breakfast, Ping Pong, Fellowship, Stitch Club and Sunday Bible Study should there be changes. As stated almost every month, the pandemic is unpredictable. It is hoped that we have seen the last spike in infection. But please be aware, should there be another spike in infection, we may need to adopt great COVID precautions again.

As we ease up COVID precautions for worship and our ministries, these precautions continue:

- Strongly encouraged mask wearing regardless of vaccination status
- Social distancing
- Sanitizing hands and objects handled
- Staying home if you have any symptoms of illness or have been in close contact with anyone with COVID.
- The availability of online worship and the use of zoom for meetings.

Our leadership will continue to gauge the situation week by week and will keep the congregation informed of any adjustment to our precautions as needed.

#### **FEBRUARY 6** **5<sup>TH</sup> SUNDAY AFTER EPIPHANY**

- 8:00 a.m. Traditional Holy Communion
- 9:00 a.m. Adult Bible Study
- 9:30 a.m. Contemporary Holy Communion
- 10:30 a.m. Fellowship Time: Jeanne Gryszka
- 10:45 a.m. Adult Bible Study

#### **FEBRUARY 13** **6<sup>TH</sup> SUNDAY AFTER EPIPHANY**

- Souper Bowl of Caring**
- 8:00 a.m. Traditional Holy Communion
- 9:00 a.m. Adult Bible Study
- 9:30 a.m. Contemporary Holy Communion
- 10:30 a.m. Fellowship Time: Gail Oines
- 10:45 a.m. Church Council Meeting

**FEBRUARY 20**

**7<sup>TH</sup> SUNDAY AFTER EPIPHANY**

8:00 a.m. Traditional Holy Communion  
9:00 a.m. Adult Bible Study  
9:30 a.m. Contemporary Holy Communion  
10:30 a.m. Fellowship Time: Open  
10:45 a.m. Adult Bible Study  
6:30 p.m. Sunday School Zoom Class

**FEBRUARY 27**

**8<sup>TH</sup> SUNDAY AFTER EPIPHANY/  
TRANSFIGURATION OF OUR LORD**

8:00 a.m. No service - 1 service 9:00 a.m.  
9:00 a.m. Blended Holy Communion  
10:00 a.m. Annual Congregational  
Meeting - in person and on Zoom  
Zoom access information page 5  
6:30 p.m. Sunday School Zoom Class

Sunday services may also be attended by **Zoom** and will be live streamed on **Facebook**. A recording of the services will be uploaded to **YouTube** and linked to our website immediately after the service concludes.

**YouTube:** Click on the church website link after **12:00 p.m.** Sunday

morning: <https://www.adventrichboro.org/>

**Facebook:** Go to the church Facebook page: <https://www.facebook.com/adventrichboropa/>

**Zoom:**

Smart device/Computer instructions- Click on this link for Traditional Worship at 8:00 a.m.

Click on this link for Contemporary Worship at 9:30 a.m.

**The full zoom invitations are pasted below:**

Phone instructions: Call 1-646-558-8656

While using Zoom, please mute yourself when you are not speaking.

Scheduled Zoom meetings: Topic: **Advent Lutheran Church Traditional Holy Communion**

Time: This is a recurring meeting Meet anytime

Join Zoom Meeting

<https://us02web.zoom.us/j/89195039877?pwd=dnVRTIRGamJQVXNZbENlVDJTT0pnUT09>

**8:00 A.M. Meeting ID: 891 9503 9877      Passcode: 443533**

Scheduled Zoom meetings: Topic: **Advent Lutheran Church Traditional Holy Communion**

Time: This is a recurring meeting Meet anytime

Join Zoom Meeting

<https://us02web.zoom.us/j/85405629972?pwd=aGErSFNlbVAvNmZsQkIzWVpTTktlQT09>

**9:30 A.M. Meeting ID: 854 0562 9972      Passcode: 506714**

Scheduled Zoom meetings: Topic: **Advent Lutheran Church Contemporary Holy Communion**



## PASTOR MATT'S THOUGHTS FOR FEBRUARY, 2022

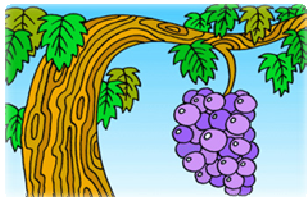
In November a woman visited Advent during Sunday worship. She was homeless living out of her mini-van and was having car trouble. We allowed her to stay in our parking lot three nights as we sought to repair her vehicle. On that Tuesday Millevoi Brothers' garage fixed her vehicle free of charge. Our visitor left to continue her journey Wednesday morning. This congregation made me proud. We greeted her with kindness and compassion. Folks did an ad-hoc collection of cash to assist her Sunday morning. We had members who checked in on our visitor regularly. We allowed her use the facilities at the church. Members provided her a warm dinner on the nights she was with us. Thank you to our numerous members who showed concern and prayed for our visitor. So often in our society the dignity of homeless is not respected even by those who offer help. I am absolutely proud of how this congregation responded to our visitor as a fellow Child of God with great compassion and generosity.

This occasion lifted to the awareness of our congregation a vital ministry churches occasionally provide to those in immediate need. Our visitor in November came on a Sunday during worship, but she is not the first person to come to our doors seeking help since I have been at Advent. In fact, folks seeking help have come to every church I have served throughout the years. (Most of the time when folks came seeking help I treat the situation confidentially, especially if the person is a church member and requests that I do as such.) Sometimes the situation requires financial help. The van of our visitor in November was thankfully fixed for free, but at the time I was in discussion with our leadership about if and how much we would pay for a repair. This is where a pastoral discretionary fund is a useful ministry of the congregation. Over the years at the churches I have served, I have used a pastoral discretionary fund to feed the hungry, help folks with the rent, keep the heat and electricity on, get the stranded home, provides the destitute with legal help and puts diapers on babies. There are always social services in the area to which I make recommendations, but these services deal with high demand, limited resources and often have restrictions that keep them from helping all situations. Most social services are set up to provide long term aid and solutions, but are often are unable to address emergencies. I always try to coordinate the help I provide with the help and resources in the broader community. A pastoral discretionary fund can bridge the gap between immediate need and long term help and solutions, where folks would otherwise slip through the cracks.

In the past there was a pastoral discretionary fund at Advent referred to as "Advent Aid". If I am not mistaken based on what I have been able to learn, Advent Aid was in place primarily to help members of Advent. Church Council and I feel that it is important that we reintroduce Advent Aid to the congregation with the emphasis of helping anyone in need, member or non-member. There are some funds in Advent Aid from past years, but for Advent Aid to be effective it needs more. Please give consideration to giving to Advent Aid. It will enable us to do an important ministry in the community.

You may never actually see this ministry happen because it is usually done confidentially, but you need to know that this ministry can not happen without your help. With your help, I would like to never have to turn away anyone in great need. That someone maybe a stranger, a person you unwittingly know or maybe, though I would never wish it on anyone, you yourself some day. Multipurpose envelopes can be found in the rack on back of the pews at church. Provide your envelope number, specify **Advent Aid** and your offering will count on your giving statement. You can also give online at the church website. Thank you and may God's blessings be with you.

**God's Peace be with you,  
Pastor Matt**



## Bible Lesson for Kids

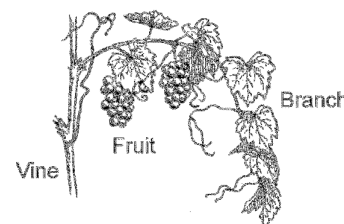
### Stay Connected To Jesus!

**“I am the vine; you are the branches.  
If you remain in me and I in you, you will bear much fruit;  
apart from me you can do nothing.”**

**John 15:5**

Jesus taught his followers about God’s love for them. He talked about the grapevines that grew nearby. Each grapevine needed care to produce wonderful fruit. To give energy to the fruit, the grower would cut some branches off of the vine, leaving strong branches for the grapes to grow. God wants us to be like those strong branches, showing others the love he has shared with us. Without God, we would be cut away and wither.

Even today at vineyards, we see that each vine is carefully pruned to send nourishment from the vine through the branches to heavy bunches of grapes, which taste sweeter by harvest time. As we stay “on the vine” and get our strength from Jesus, we feel his joy as we honor God.



As we remain in Jesus—stay connected to him—he can do great things through us. With Jesus as the vine while we are the branches, what kind of fruit will we produce? We will spread the joy of knowing that God loves us and we will share the good news that our sins are forgiven through Jesus. Share God’s love!

### **SUNDAY SCHOOL ZOOM IN FEBRUARY**



In February, Sunday School will meet on **zoom** on the **3rd and 4th Sundays**. New students are welcome! Pastor Matt and the Sunday School teachers guide us through the Bible lessons. Let us know if you’d like to join us and we’ll order student books and crafts for you!

Our fun curriculum is called ***Holy Moly***. The lessons are written in rhyme, the illustrations are graphic novel style and the short videos bring the Bible stories to life!

Please contact the church office to register or with any questions: [office@adventrichboro.org](mailto:office@adventrichboro.org) or 215-355-2529. We’ll see you soon on zoom! - Jeanne Gryszka, Sunday School Director

Topic: Advent Lutheran Sunday School  
Time: This is a recurring meeting Meet anytime  
Join Zoom Meeting

<https://us02web.zoom.us/j/88465369380?pwd=dldlcldteUhuV05UdENJSnZrZktndz09>

Meeting ID: 884 6536 9380

Passcode: 306287

	SUNDAY	SCHOOL
February	20	6:30 p.m.
	27	“

**A picture to color, page 10**

## INSTALLATION OF LEADERS IN THE CONGREGATION ON JANUARY 16

The following people have been *elected* [by the congregation] to positions of leadership. We give thanks for their willingness to serve. In baptism we are welcomed into the body of Christ and sent to share in the mission of God; we rejoice now that these *sisters and brothers* will lead us in our common life and our mutual mission as a congregation.

Pastor, Rev. Matthew Ollikainen  
President, George Henry  
Vice President, Bob Matlack  
Financial Secretary, Cindy Frey  
Treasurer, Nancy Hill  
Secretary, Jennifer McQuiggan  
Christian Education – vacant

Congregational Life - vacant  
Evangelism, Bob Matlack  
Finance/Stewardship, Tony Gryszka  
Property, Lynn Roccograndi  
Social Ministry, Nancy Sclight  
Youth – vacant  
Worship and Music, Gail Oines

We currently have three vacancies on Church Council. If you're interested in filling one of the positions, please contact Pastor Matt, George Henry, or Tony Gryszka. Thank you.



### EVANGELISM

February is the "love" month. How can we as Christians share that love with others? It is easy to share love with your family and close friends. What about neighbors? Strangers? Those you see in the store or at work?

Stop and say hello. If you know them by name, use it. Humans react when they hear their name spoken. Ask them how they are doing. Ask if there are any concerns or needs for prayer. You don't have to stop and pray right there, but if you are prompted by the Holy Spirit - do it! Otherwise you can offer their needs up in prayer later at home or in church. And if it is something critical, please be sure to let me know so I can put their needs on our prayer chain. God is Love. Our duty is to share that with the world.

Karen Matlack, kmatl22349@verizon.net



### SOCIAL MINISTRY

As the New Year begins, the work of our local Food Bank continues. It is not unusual for us to serve 10 or more families each day that the Bank is open. The local churches in Bucks County are the backbone that keeps us going! Please consider donating whatever you can each month either on days that the church office is open or you can deposit your bags in the bench outside the main entrance anytime. For suggestions on which items are requested each week, go to [www.warminsterfoodbank.org](http://www.warminsterfoodbank.org).

Thank-you for your continued support of this important mission.

Nancy Sclight, Social Ministry



### 2022 ANNUAL CONGREGATIONAL MEETING

On Sunday February 27 Advent will have **one worship service at 9:00 a.m.** followed by our Annual Meeting at 10:00 a.m.. We will review the reports for 2021. We will also choose representatives for Synod Assembly on April 30th. It is important that we have good attendance. Please support your church by attending in person or online by Zoom.

Join Zoom Meeting

<https://zus02web.zoom.us/j/87377732721?pwd=cTNqeHRDUjRGbWhyM2RSNDIEY0Y3QT09>



### **ASH WEDNESDAY SERVICES**

We will be having Ash Wednesday service on Wednesday, **March 2 at Noon and 7:00 p.m.** in person and on line. We will also be having mid week Lenten Services throughout five weeks of Lenten. More information on the mid week services will be include in the March Newsletter.

Noon Ash Wednesday Service

<https://us02web.zoom.us/j/87844300892?pwd=Q3N0RENjL093ZGFFVmhneUtkYS9Ydz09>

7:00p.m. Ash Wednesday Service

<https://us02web.zoom.us/j/88386369457?pwd=cm1yb2dhZTNUOFZkaGtycUpzeVk1dz09>

Ash Wednesday services may also be attended by **Zoom** and will be live streamed on **Facebook**. A recording of the services will be uploaded to **YouTube** and linked to our website immediately after the service concludes.

**YouTube:** Click on the church website link after **1:00 p.m.** on Ash Wednesday for Noon service and 8 p.m. for the 7:00 p.m. service: <https://www.adventrichboro.org/>

**Facebook:** Go to the church Facebook page: <https://www.facebook.com/adventrichboropa/>

**Zoom:**

Smart device/Computer instructions- Click on the links listed above for the Noon Service and 7:00 p.m. Service.

Phone instructions: Call 1-646-558-8656

While using Zoom, please mute yourself when you are not speaking.



### **WEDNESDAY NIGHT BIBLE STUDY**

Weekly Wednesday night bible study at 7:00 p.m. will continue on zoom. Our topic will be Jesus' Parables. If there is a parable that you would be interested in studying, please let me know at [pastor@adventrichboro.org](mailto:pastor@adventrichboro.org) .

Here is the Zoom invitation:

<https://us02web.zoom.us/j/89632518358?pwd=Smg5dm1Ba0VZamZjNG1YMk02MlVvdz09>



### **PING PONG - TUESDAYS AT 6:30 STARTING FEBRUARY 1**

All are welcome to join us for an evening of Ping Pong at the church on Tuesday nights at 6:30 p.m., starting February 1. Contact Ray Heiss or Pastor Matt for additional information.



### **MEN'S BREAKFAST GROUP SATURDAY, FEBRUARY 12**

Hang in there. In spite of the unscheduled delay in our menu selection for 2022, (notice, we did not say new menus) we plan to try again for the first breakfast of the New Year on Saturday, February 12. We serve at 8:30 (AM) but feel free to be early. Coffee is ready by 7:30 a.m. Dave



### **STITCH CLUB SATURDAYS 10:00 A.M.**

Stitch club will start to meet again, starting Saturday, February 5, at **10:00 a.m.** (**weather permitting**). Stitch club is open to all who would like to join. If you like to knit, crochet, or do needlepoint, this is for you!

### **STITCH CLUB ITEMS ARE AVAILABLE THROUGHOUT THE**

Stitch club items are **available throughout the year**. If you need any of the items made by the Stitch Club, i.e., blankets, hats, baby items, please contact Hanna McCollum 215-962-9032 or Jeff Jobes 215-355-4149.

### **“SOUPER BOWL” OF CARING**



On **Sunday, February 13**, Advent will once again take a special collection for Souper Bowl of Caring. All donations will go directly to the food pantry in Warminster. Checks should be made out to Advent Lutheran Church and designated “Souper Bowl of Caring”. Thank you for your support of this worthy cause.

### **OFFERING ENVELOPES**

Offering envelopes for 2022 are available in the Narthex. If you do not have envelopes and would like them, please contact the Financial Secretary, Cindy Frey at 267-205-0713.

### **2022 CALENDARS**

The 2022 Calendars from **Joseph A. Fluehr, III, Funeral Home, Inc.** are here. Calendars are located in the narthex and at the front entrance of the church on the shelf to the right. Please take as many calendars as you need.



### **FILL A TRAY AT MEALTIME**

Look for aluminum trays on the tables in our narthex . . . Take some home to await any meal that has one serving left – or perhaps you’ve made extra food on purpose! Fill the 3 sections, add the foil cover, plus the label and bag that come with the tray. Voila! A meal for a shut-in or a person in need!

Advent has a dedicated freezer for meals and we drop them off at Caring for Friends when our freezer fills up. We continue this effort throughout the year. The impact of your food or monetary donation can be viewed on [caringforfriends.org](http://caringforfriends.org).



### **ALTAR FLOWER DEDICATION**

There are numerous dates available for 2022 to dedicate flowers to beautify the altar each Sunday. Please sign up on the sheet on the table in the narthex with your name and dedication. Two bouquets are available each week. The cost is \$25 per bouquet. In addition to making the altar more beautiful, you take the flowers home after the late service to enjoy during the week. If you have any questions call Cindy Frey 267-205-0713.

## **MISSION SUPPORT FOR 2022**

The sign-up sheets Mission Support dedications for 2022 are in the narthex. The cost to dedicate one bouquet is \$25.00. One week of Mission support is \$25.00. There are many openings available on the Mission Support chart for 2022.



## **NUEVA CREACION LUTHERAN CHURCH**

Please keep Pastor Lyzette Rios Sanchez and our mission congregation Nueva Creación Lutheran Church in your prayers. Your mission support gifts help them to minister in an impoverished area of Philadelphia.



## **THE ARMED FORCES**

Please keep in your prayers all our service men and women and especially those related to our congregation:

Lt. Col. Andrew M Frey, Jr is serving as Senior Weather Officer, NORAD/NORTHCOM stationed at Peterson AFB, Colorado Springs,

US Air Force Major Fred Gouse is a pilot and instructor stationed at Holloman AFB, New Mexico.

US Army Colonel (Ret.) Jeff Williams is serving in Dubai, UAE as a military advisor.

US Army Ranger Liam McKendry, grandson of Pastor Jo stationed in Fort Benning, GA

If there are any errors or omissions, please notify the church office. Thank you.

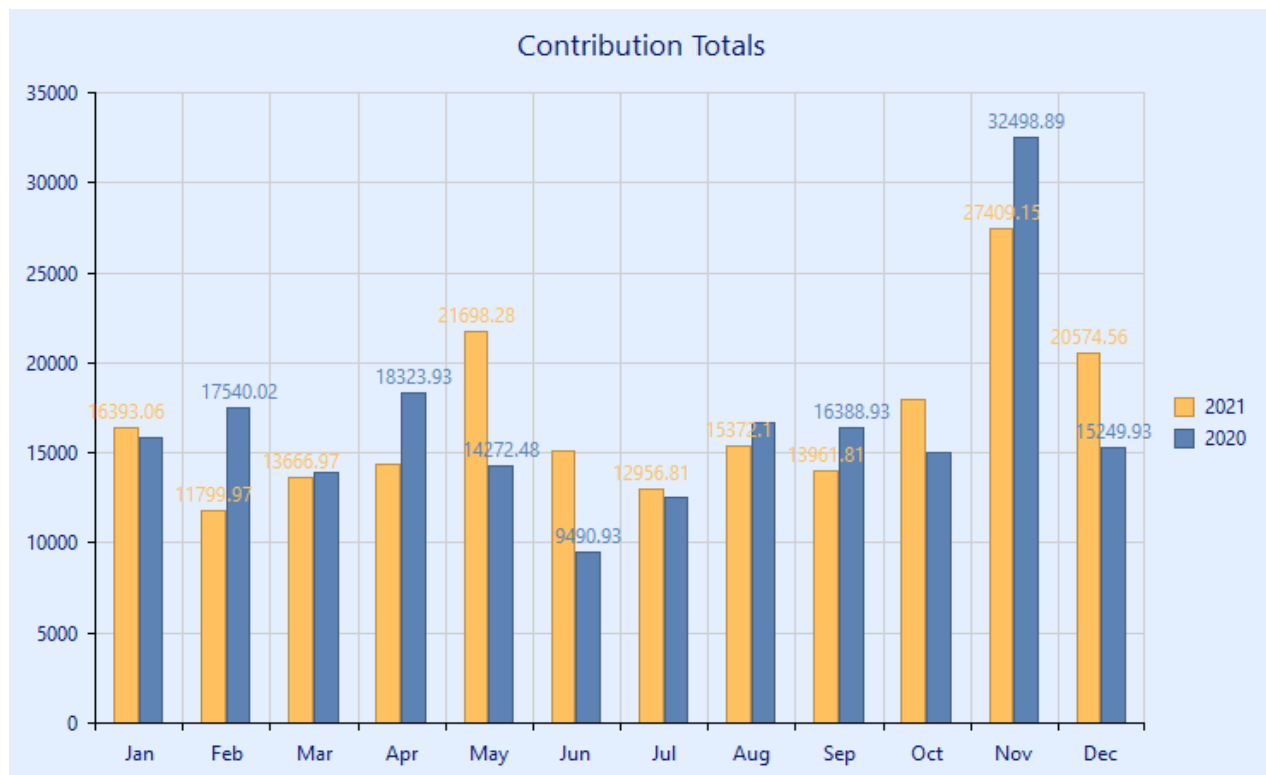
## **FINANCE/TIME AND TALENT REPORT**

Thank you for your continued generosity! Your financial gifts enabled Advent to continue all our ministries throughout the year. For calendar year 2021, all sources of revenue exceeded expenses by \$4,108.

Benevolence offerings were \$8,824, an increase of 57% from year 2020. Your gifts are making a difference in the local community and throughout the world. Many have also been able to donate their time and talents in numerous ways throughout the year. Thank you for keeping Advent in your routine in so many ways! Offerings may be brought to worship services, dropped off in person at the church office (normally Tues-Thurs between 9:00-1:00, please call first), or mailed to P.O. Box 840, Richboro, PA 18954-0840. All offerings are confidential.

Tony Gryska, Finance Committee Chairperson

## **FINANCIAL UPDATE**



### **Income for December 2021**

Benevolence (LWR, Mission Support, etc.)	\$ 520.00
General Fund	\$17,492.06
Mortgage Fund	\$ 2,562.50

Thanks to everyone for your continued financial support of the church this year. We greatly appreciate it. There are numerous ways to continue your offerings.

- Drop off your offering at the church office. The office is usually open on Tuesday, Wednesday and Thursday between 10 AM and 1 PM. Call to confirm hours.
- Mail a check to the church. The mailing address is "Advent Lutheran Church, PO Box 840, Richboro, PA 18954"
- Contribute online at [www.adventrichboro.org](http://www.adventrichboro.org). At the top of the page, click the "Give Now" link to see frequently asked questions. At the bottom of the page click the "Give Now" link for our Giving platform. You may also choose to set up recurring donations or a one-time donation.

Again, thank you for your continued support. If you have any questions concerning your offering please call Cindy Frey, Financial Secretary 267-205-0713

## **SERVING IN WORSHIP - FEBRUARY'S SCHEDULE**

### **WORSHIP ASSISTANTS – 8:00 AM**

2/6 Jeanne Gryszka  
2/13 Dave Shearer  
2/20 Nancy Hill  
2/27 1 service 9:00 a.m.

### **WORSHIP ASSISTANTS – 9:30 A.M.**

2/6 Karen Matlack  
2/13 Gail Oines  
2/20 Jennifer McQuiggan

### **WORSHIP ASSISTANT – 9:00 a.m.**

2/27 John Flint

### **ALTAR GUILD**

8:00 A.M. Hanna McCollum  
9:30 A.M. Karen Matlack, Gail Oines,  
Nancy Slight, Rhona Slawter

### **OUR TECH CREW**

Joel Denis, Mike Dettra, Karen Matlack, Tony  
Gryzka, Gary Zimmerman

### **FLOWER DISTRIBUTION**

Linda Brownlee, Audrey Savchuck, Nancy  
Slight, Rhona Slawter



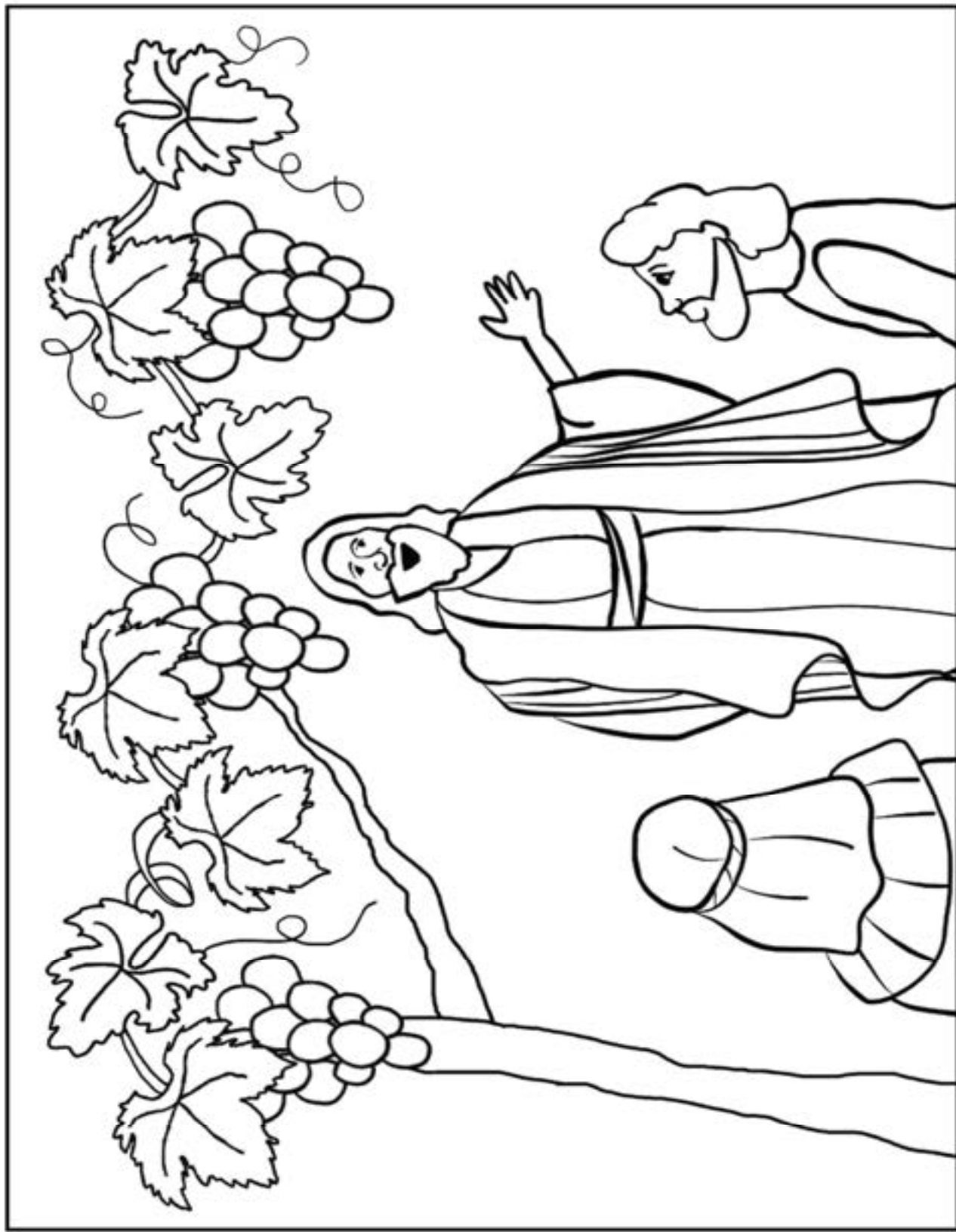
## **ADVENT'S BIRTHDAY CORNER** **FEBRUARY BIRTHDAYS**



5	Mike Sitler	9	Marion Schmidt	18	Julianna Ward
6	Stephanie Morley	13	Nicole Shearer	19	Kali (Frey) Marino
9	David Frost	15	Jacob Duffy	24	Stephen Anderson

Please contact the church office if you or someone you know has been omitted from the list.

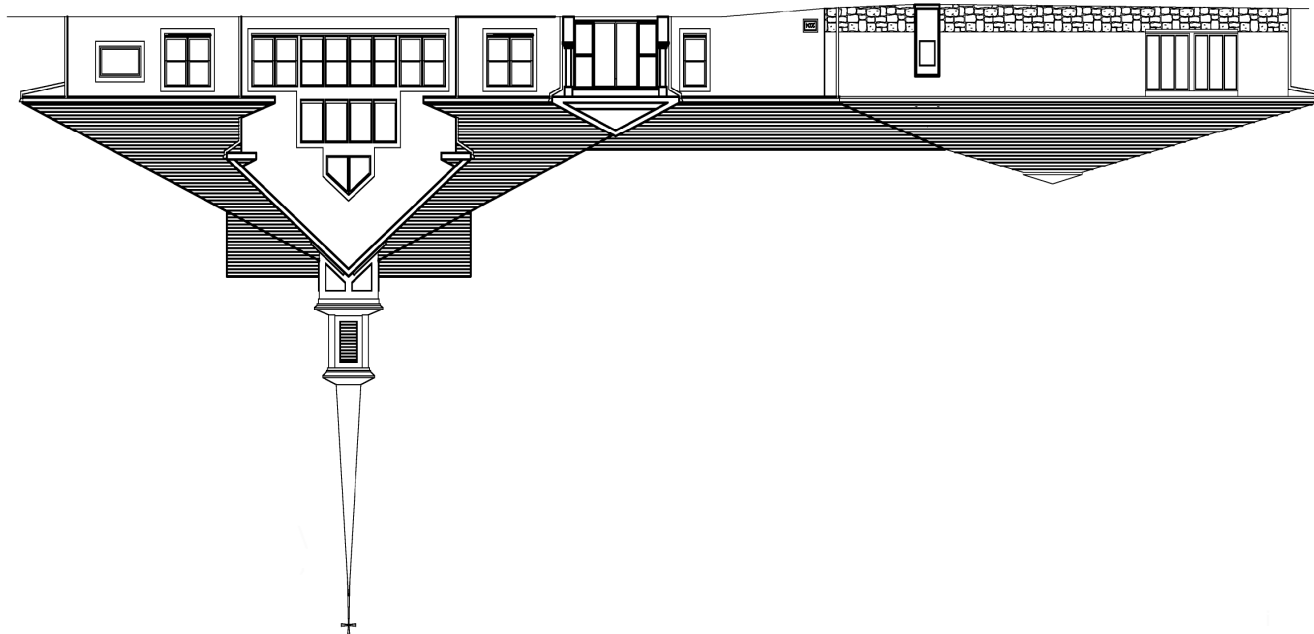
Thank you.



I Am the True Vine

# February

Sunday	Monday	Tuesday	Wednesday	Thursday	Friday	Saturday
		1 6:30 PM Ping Pong	2 7:00 PM Bible Study via Zoom	3	4 7:30 PM A.A. Step Mtg.	5 10:00 AM Stitch Club
6 <u>5<sup>th</sup> Sunday After Epiphany</u> 8:00 AM Traditional Holy Communion 9:00 AM Adult Bible Study 9:30 AM Contemporary Holy Communion 10:30 AM Fellowship Time: Jeanne Gryszka 10:45 AM Adult Bible Study	7 7:30 PM A.A. Open Meeting	8 6:30 PM Ping Pong	9 7:00 PM Bible Study via Zoom	10	11 7:30 PM A.A. Step Mtg.	12 8:30 AM Men's Breakfast 10:00 AM Stitch Club
13 <u>6<sup>th</sup> Sunday After Epiphany</u> <u>Souper Bowl of Caring</u> 8:00 AM Traditional Holy Communion 9:00 AM Adult Bible Study 9:30 AM Traditional Holy Communion 10:30 AM Fellowship Time: Open 10:45 AM Church Council Meeting	14 7:30 PM A.A. Open Meeting	15 6:30 PM Ping Pong	16 7:00 PM Bible Study via Zoom	17	18 7:30 PM A.A. Step Mtg.	19 10:00 AM Stitch Club
20 <u>7<sup>th</sup> Sunday After Epiphany</u> 8:00 AM Traditional Holy Communion 9:00 AM Adult Bible Study 9:30 AM Contemporary Holy Communion 10:30 AM Fellowship Time: Open 10:45 AM Adult Bible Study 6:30 PM Sunday School Class via Zoom	21 7:30 PM A.A. Open Meeting	22 6:30 PM Ping Pong	23 7:00 PM Bible Study via Zoom	24	25 7:30 PM A.A. Step Mtg.	26 10:00 AM Stitch Club
27 <u>Transfiguration of our Lord</u> 9:00 AM Blended Holy Communion 10:00 AM ANNUAL CONGREGATIONAL MEETING 6:30 PM Sunday School Class via Zoom	28 7:30 PM A.A. Open Meeting					



*Advent Evangelical Lutheran Church*

45 Worthington Mill Rd.

P.O. Box 840

Richboro, PA18954-0840

Address Service Requested

# THE ADVENTURE - 2022

## FEBRUARY

### ADVENT LUTHERAN CHURCH

#### OUR MISSION – FAITHFUL IN THE WORD

- + To **gather** as God's people and nurture one another
- + To **know** the Word of God
- + To **grow** in faith, love, and service
- + To **go** into the world with the Good News of Jesus Christ



Rev. Matthew E. Ollikainen, Pastor  
45 Worthington Mill Road  
P. O. Box 840, Richboro, PA 18954  
215-355-2529  
web: [www.adventrichboro.org](http://www.adventrichboro.org)  
e-mail: [office@adventrichboro.org](mailto:office@adventrichboro.org)



Advent Evangelical Lutheran Church continues to worship indoors and online. Thank God that the increased COVID infections rate, due to the Omnicron variant we saw in December and January, has been subsiding. As of the writing of this newsletter it appears that we will be able to resume communion and sing in worship for the month of February. It also appears that we will be able to resume our ministries. Please watch for communications from our ministry leaders regarding the Men's Breakfast, Ping Pong, Fellowship, Stitch Club and Sunday Bible Study should there be changes. As stated almost every month, the pandemic is unpredictable. It is hoped that we have seen the last spike in infection. But please be aware, should there be another spike in infection, we may need to adopt great COVID precautions again.

As we ease up COVID precautions for worship and our ministries, these precautions continue:

- Strongly encouraged mask wearing regardless of vaccination status
- Social distancing
- Sanitizing hands and objects handled
- Staying home if you have any symptoms of illness or have been in close contact with anyone with COVID.
- The availability of online worship and the use of zoom for meetings.

Our leadership will continue to gauge the situation week by week and will keep the congregation informed of any adjustment to our precautions as needed.

#### **FEBRUARY 6** **5<sup>TH</sup> SUNDAY AFTER EPIPHANY**

- 8:00 a.m. Traditional Holy Communion
- 9:00 a.m. Adult Bible Study
- 9:30 a.m. Contemporary Holy Communion
- 10:30 a.m. Fellowship Time: Jeanne Gryszka
- 10:45 a.m. Adult Bible Study

#### **FEBRUARY 13** **6<sup>TH</sup> SUNDAY AFTER EPIPHANY**

- Souper Bowl of Caring**
- 8:00 a.m. Traditional Holy Communion
- 9:00 a.m. Adult Bible Study
- 9:30 a.m. Contemporary Holy Communion
- 10:30 a.m. Fellowship Time: Gail Oines
- 10:45 a.m. Church Council Meeting

**FEBRUARY 20**

**7<sup>TH</sup> SUNDAY AFTER EPIPHANY**

8:00 a.m. Traditional Holy Communion  
9:00 a.m. Adult Bible Study  
9:30 a.m. Contemporary Holy Communion  
10:30 a.m. Fellowship Time: Open  
10:45 a.m. Adult Bible Study  
6:30 p.m. Sunday School Zoom Class

**FEBRUARY 27**

**8<sup>TH</sup> SUNDAY AFTER EPIPHANY/  
TRANSFIGURATION OF OUR LORD**

8:00 a.m. No service - 1 service 9:00 a.m.  
9:00 a.m. Blended Holy Communion  
10:00 a.m. Annual Congregational  
Meeting - in person and on Zoom  
Zoom access information page 5  
6:30 p.m. Sunday School Zoom Class

Sunday services may also be attended by **Zoom** and will be live streamed on **Facebook**. A recording of the services will be uploaded to **YouTube** and linked to our website immediately after the service concludes.

**YouTube:** Click on the church website link after **12:00 p.m.** Sunday

morning: <https://www.adventrichboro.org/>

**Facebook:** Go to the church Facebook page: <https://www.facebook.com/adventrichboropa/>

**Zoom:**

Smart device/Computer instructions- Click on this link for Traditional Worship at 8:00 a.m.

Click on this link for Contemporary Worship at 9:30 a.m.

**The full zoom invitations are pasted below:**

Phone instructions: Call 1-646-558-8656

While using Zoom, please mute yourself when you are not speaking.

Scheduled Zoom meetings: Topic: **Advent Lutheran Church Traditional Holy Communion**

Time: This is a recurring meeting Meet anytime

Join Zoom Meeting

<https://us02web.zoom.us/j/89195039877?pwd=dnVRTIRGamJQVXNZbENlVDJTT0pnUT09>

**8:00 A.M. Meeting ID: 891 9503 9877      Passcode: 443533**

Scheduled Zoom meetings: Topic: **Advent Lutheran Church Traditional Holy Communion**

Time: This is a recurring meeting Meet anytime

Join Zoom Meeting

<https://us02web.zoom.us/j/85405629972?pwd=aGErSFNlbVAvNmZsQkIzWVpTTktlQT09>

**9:30 A.M. Meeting ID: 854 0562 9972      Passcode: 506714**

Scheduled Zoom meetings: Topic: **Advent Lutheran Church Contemporary Holy Communion**



## PASTOR MATT'S THOUGHTS FOR FEBRUARY, 2022

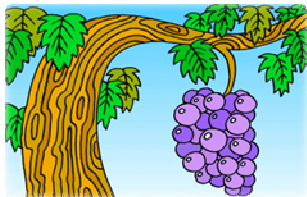
In November a woman visited Advent during Sunday worship. She was homeless living out of her mini-van and was having car trouble. We allowed her to stay in our parking lot three nights as we sought to repair her vehicle. On that Tuesday Millevoi Brothers' garage fixed her vehicle free of charge. Our visitor left to continue her journey Wednesday morning. This congregation made me proud. We greeted her with kindness and compassion. Folks did an ad-hoc collection of cash to assist her Sunday morning. We had members who checked in on our visitor regularly. We allowed her use the facilities at the church. Members provided her a warm dinner on the nights she was with us. Thank you to our numerous members who showed concern and prayed for our visitor. So often in our society the dignity of homeless is not respected even by those who offer help. I am absolutely proud of how this congregation responded to our visitor as a fellow Child of God with great compassion and generosity.

This occasion lifted to the awareness of our congregation a vital ministry churches occasionally provide to those in immediate need. Our visitor in November came on a Sunday during worship, but she is not the first person to come to our doors seeking help since I have been at Advent. In fact, folks seeking help have come to every church I have served throughout the years. (Most of the time when folks came seeking help I treat the situation confidentially, especially if the person is a church member and requests that I do as such.) Sometimes the situation requires financial help. The van of our visitor in November was thankfully fixed for free, but at the time I was in discussion with our leadership about if and how much we would pay for a repair. This is where a pastoral discretionary fund is a useful ministry of the congregation. Over the years at the churches I have served, I have used a pastoral discretionary fund to feed the hungry, help folks with the rent, keep the heat and electricity on, get the stranded home, provides the destitute with legal help and puts diapers on babies. There are always social services in the area to which I make recommendations, but these services deal with high demand, limited resources and often have restrictions that keep them from helping all situations. Most social services are set up to provide long term aid and solutions, but are often are unable to address emergencies. I always try to coordinate the help I provide with the help and resources in the broader community. A pastoral discretionary fund can bridge the gap between immediate need and long term help and solutions, where folks would otherwise slip through the cracks.

In the past there was a pastoral discretionary fund at Advent referred to as "Advent Aid". If I am not mistaken based on what I have been able to learn, Advent Aid was in place primarily to help members of Advent. Church Council and I feel that it is important that we reintroduce Advent Aid to the congregation with the emphasis of helping anyone in need, member or non-member. There are some funds in Advent Aid from past years, but for Advent Aid to be effective it needs more. Please give consideration to giving to Advent Aid. It will enable us to do an important ministry in the community.

You may never actually see this ministry happen because it is usually done confidentially, but you need to know that this ministry can not happen without your help. With your help, I would like to never have to turn away anyone in great need. That someone maybe a stranger, a person you unwittingly know or maybe, though I would never wish it on anyone, you yourself some day. Multipurpose envelopes can be found in the rack on back of the pews at church. Provide your envelope number, specify **Advent Aid** and your offering will count on your giving statement. You can also give online at the church website. Thank you and may God's blessings be with you.

**God's Peace be with you,  
Pastor Matt**



## Bible Lesson for Kids

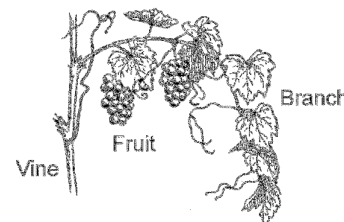
### Stay Connected To Jesus!

**“I am the vine; you are the branches.  
If you remain in me and I in you, you will bear much fruit;  
apart from me you can do nothing.”**

**John 15:5**

Jesus taught his followers about God’s love for them. He talked about the grapevines that grew nearby. Each grapevine needed care to produce wonderful fruit. To give energy to the fruit, the grower would cut some branches off of the vine, leaving strong branches for the grapes to grow. God wants us to be like those strong branches, showing others the love he has shared with us. Without God, we would be cut away and wither.

Even today at vineyards, we see that each vine is carefully pruned to send nourishment from the vine through the branches to heavy bunches of grapes, which taste sweeter by harvest time. As we stay “on the vine” and get our strength from Jesus, we feel his joy as we honor God.



As we remain in Jesus—stay connected to him—he can do great things through us. With Jesus as the vine while we are the branches, what kind of fruit will we produce? We will spread the joy of knowing that God loves us and we will share the good news that our sins are forgiven through Jesus. Share God’s love!

### **SUNDAY SCHOOL ZOOM IN FEBRUARY**



In February, Sunday School will meet on **zoom** on the **3rd and 4th Sundays**. New students are welcome! Pastor Matt and the Sunday School teachers guide us through the Bible lessons. Let us know if you’d like to join us and we’ll order student books and crafts for you!

Our fun curriculum is called ***Holy Moly***. The lessons are written in rhyme, the illustrations are graphic novel style and the short videos bring the Bible stories to life!

Please contact the church office to register or with any questions: [office@adventrichboro.org](mailto:office@adventrichboro.org) or 215-355-2529. We’ll see you soon on zoom! - Jeanne Gryszka, Sunday School Director

Topic: Advent Lutheran Sunday School  
Time: This is a recurring meeting Meet anytime  
Join Zoom Meeting

<https://us02web.zoom.us/j/88465369380?pwd=dldlcldteUhuV05UdENJSnZrZktndz09>

Meeting ID: 884 6536 9380

Passcode: 306287

	SUNDAY	SCHOOL
February	20	6:30 p.m.
	27	“

**A picture to color, page 10**

## INSTALLATION OF LEADERS IN THE CONGREGATION ON JANUARY 16

The following people have been *elected* [by the congregation] to positions of leadership. We give thanks for their willingness to serve. In baptism we are welcomed into the body of Christ and sent to share in the mission of God; we rejoice now that these *sisters and brothers* will lead us in our common life and our mutual mission as a congregation.

Pastor, Rev. Matthew Ollikainen  
President, George Henry  
Vice President, Bob Matlack  
Financial Secretary, Cindy Frey  
Treasurer, Nancy Hill  
Secretary, Jennifer McQuiggan  
Christian Education – vacant

Congregational Life - vacant  
Evangelism, Bob Matlack  
Finance/Stewardship, Tony Gryszka  
Property, Lynn Roccograndi  
Social Ministry, Nancy Sclight  
Youth – vacant  
Worship and Music, Gail Oines

We currently have three vacancies on Church Council. If you're interested in filling one of the positions, please contact Pastor Matt, George Henry, or Tony Gryszka. Thank you.



### EVANGELISM

February is the "love" month. How can we as Christians share that love with others? It is easy to share love with your family and close friends. What about neighbors? Strangers? Those you see in the store or at work?

Stop and say hello. If you know them by name, use it. Humans react when they hear their name spoken. Ask them how they are doing. Ask if there are any concerns or needs for prayer. You don't have to stop and pray right there, but if you are prompted by the Holy Spirit - do it! Otherwise you can offer their needs up in prayer later at home or in church. And if it is something critical, please be sure to let me know so I can put their needs on our prayer chain. God is Love. Our duty is to share that with the world.

Karen Matlack, kmatl22349@verizon.net



### SOCIAL MINISTRY

As the New Year begins, the work of our local Food Bank continues. It is not unusual for us to serve 10 or more families each day that the Bank is open. The local churches in Bucks County are the backbone that keeps us going! Please consider donating whatever you can each month either on days that the church office is open or you can deposit your bags in the bench outside the main entrance anytime. For suggestions on which items are requested each week, go to [www.warminsterfoodbank.org](http://www.warminsterfoodbank.org).

Thank-you for your continued support of this important mission.

Nancy Sclight, Social Ministry



### 2022 ANNUAL CONGREGATIONAL MEETING

On Sunday February 27 Advent will have **one worship service at 9:00 a.m.** followed by our Annual Meeting at 10:00 a.m.. We will review the reports for 2021. We will also choose representatives for Synod Assembly on April 30th. It is important that we have good attendance. Please support your church by attending in person or online by Zoom.

Join Zoom Meeting

<https://zus02web.zoom.us/j/87377732721?pwd=cTNqeHRDUjRGbWhyM2RSNDIEY0Y3QT09>



### **ASH WEDNESDAY SERVICES**

We will be having Ash Wednesday service on Wednesday, **March 2 at Noon and 7:00 p.m.** in person and on line. We will also be having mid week Lenten Services throughout five weeks of Lenten. More information on the mid week services will be include in the March Newsletter.

Noon Ash Wednesday Service

<https://us02web.zoom.us/j/87844300892?pwd=Q3N0RENjL093ZGFFVmhneUtkYS9Ydz09>

7:00p.m. Ash Wednesday Service

<https://us02web.zoom.us/j/88386369457?pwd=cm1yb2dhZTNUOFZkaGtycUpzeVk1dz09>

Ash Wednesday services may also be attended by **Zoom** and will be live streamed on **Facebook**. A recording of the services will be uploaded to **YouTube** and linked to our website immediately after the service concludes.

**YouTube:** Click on the church website link after **1:00 p.m.** on Ash Wednesday for Noon service and 8 p.m. for the 7:00 p.m. service: <https://www.adventrichboro.org/>

**Facebook:** Go to the church Facebook page: <https://www.facebook.com/adventrichboropa/>

**Zoom:**

Smart device/Computer instructions- Click on the links listed above for the Noon Service and 7:00 p.m. Service.

Phone instructions: Call 1-646-558-8656

While using Zoom, please mute yourself when you are not speaking.



### **WEDNESDAY NIGHT BIBLE STUDY**

Weekly Wednesday night bible study at 7:00 p.m. will continue on zoom. Our topic will be Jesus' Parables. If there is a parable that you would be interested in studying, please let me know at [pastor@adventrichboro.org](mailto:pastor@adventrichboro.org) .

Here is the Zoom invitation:

<https://us02web.zoom.us/j/89632518358?pwd=Smg5dm1Ba0VZamZjNG1YMk02MlVvdz09>



### **PING PONG - TUESDAYS AT 6:30 STARTING FEBRUARY 1**

All are welcome to join us for an evening of Ping Pong at the church on Tuesday nights at 6:30 p.m., starting February 1. Contact Ray Heiss or Pastor Matt for additional information.



### **MEN'S BREAKFAST GROUP SATURDAY, FEBRUARY 12**

Hang in there. In spite of the unscheduled delay in our menu selection for 2022, (notice, we did not say new menus) we plan to try again for the first breakfast of the New Year on Saturday, February 12. We serve at 8:30 (AM) but feel free to be early. Coffee is ready by 7:30 a.m. Dave



### **STITCH CLUB SATURDAYS 10:00 A.M.**

Stitch club will start to meet again, starting Saturday, February 5, at **10:00 a.m.** (**weather permitting**). Stitch club is open to all who would like to join. If you like to knit, crochet, or do needlepoint, this is for you!

### **STITCH CLUB ITEMS ARE AVAILABLE THROUGHOUT THE**

Stitch club items are **available throughout the year**. If you need any of the items made by the Stitch Club, i.e., blankets, hats, baby items, please contact Hanna McCollum 215-962-9032 or Jeff Jobes 215-355-4149.

### **“SOUPER BOWL” OF CARING**



On **Sunday, February 13**, Advent will once again take a special collection for Souper Bowl of Caring. All donations will go directly to the food pantry in Warminster. Checks should be made out to Advent Lutheran Church and designated “Souper Bowl of Caring”. Thank you for your support of this worthy cause.

### **OFFERING ENVELOPES**

Offering envelopes for 2022 are available in the Narthex. If you do not have envelopes and would like them, please contact the Financial Secretary, Cindy Frey at 267-205-0713.

### **2022 CALENDARS**

The 2022 Calendars from **Joseph A. Fluehr, III, Funeral Home, Inc.** are here. Calendars are located in the narthex and at the front entrance of the church on the shelf to the right. Please take as many calendars as you need.



### **FILL A TRAY AT MEALTIME**

Look for aluminum trays on the tables in our narthex . . . Take some home to await any meal that has one serving left – or perhaps you’ve made extra food on purpose! Fill the 3 sections, add the foil cover, plus the label and bag that come with the tray. Voila! A meal for a shut-in or a person in need!

Advent has a dedicated freezer for meals and we drop them off at Caring for Friends when our freezer fills up. We continue this effort throughout the year. The impact of your food or monetary donation can be viewed on [caringforfriends.org](http://caringforfriends.org).



### **ALTAR FLOWER DEDICATION**

There are numerous dates available for 2022 to dedicate flowers to beautify the altar each Sunday. Please sign up on the sheet on the table in the narthex with your name and dedication. Two bouquets are available each week. The cost is \$25 per bouquet. In addition to making the altar more beautiful, you take the flowers home after the late service to enjoy during the week. If you have any questions call Cindy Frey 267-205-0713.

## **MISSION SUPPORT FOR 2022**

The sign-up sheets Mission Support dedications for 2022 are in the narthex. The cost to dedicate one bouquet is \$25.00. One week of Mission support is \$25.00. There are many openings available on the Mission Support chart for 2022.



## **NUEVA CREACION LUTHERAN CHURCH**

Please keep Pastor Lyzette Rios Sanchez and our mission congregation Nueva Creación Lutheran Church in your prayers. Your mission support gifts help them to minister in an impoverished area of Philadelphia.



## **THE ARMED FORCES**

Please keep in your prayers all our service men and women and especially those related to our congregation:

Lt. Col. Andrew M Frey, Jr is serving as Senior Weather Officer, NORAD/NORTHCOM stationed at Peterson AFB, Colorado Springs,

US Air Force Major Fred Gouse is a pilot and instructor stationed at Holloman AFB, New Mexico.

US Army Colonel (Ret.) Jeff Williams is serving in Dubai, UAE as a military advisor.

US Army Ranger Liam McKendry, grandson of Pastor Jo stationed in Fort Benning, GA

If there are any errors or omissions, please notify the church office. Thank you.

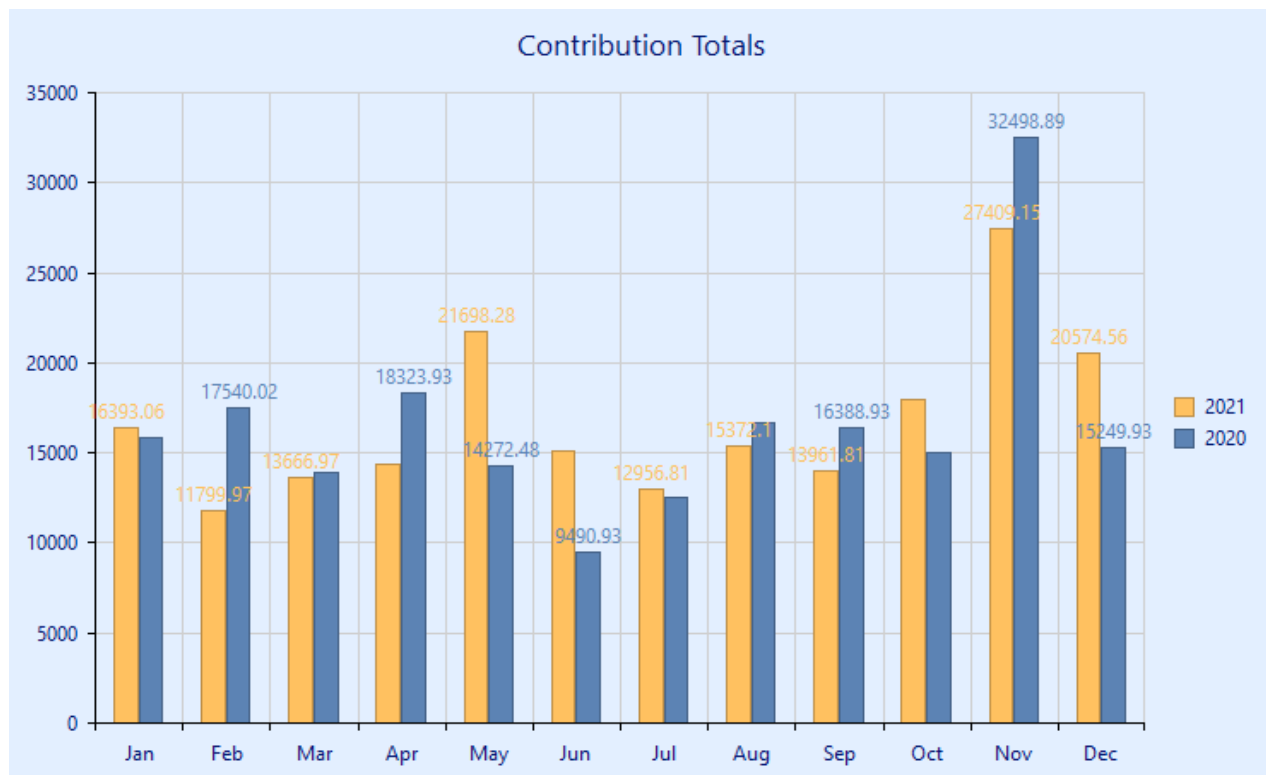
## **FINANCE/TIME AND TALENT REPORT**

Thank you for your continued generosity! Your financial gifts enabled Advent to continue all our ministries throughout the year. For calendar year 2021, all sources of revenue exceeded expenses by \$4,108.

Benevolence offerings were \$8,824, an increase of 57% from year 2020. Your gifts are making a difference in the local community and throughout the world. Many have also been able to donate their time and talents in numerous ways throughout the year. Thank you for keeping Advent in your routine in so many ways! Offerings may be brought to worship services, dropped off in person at the church office (normally Tues-Thurs between 9:00-1:00, please call first), or mailed to P.O. Box 840, Richboro, PA 18954-0840. All offerings are confidential.

Tony Gryska, Finance Committee Chairperson

## **FINANCIAL UPDATE**



### **Income for December 2021**

Benevolence (LWR, Mission Support, etc.)	\$ 520.00
General Fund	\$17,492.06
Mortgage Fund	\$ 2,562.50

Thanks to everyone for your continued financial support of the church this year. We greatly appreciate it. There are numerous ways to continue your offerings.

- Drop off your offering at the church office. The office is usually open on Tuesday, Wednesday and Thursday between 10 AM and 1 PM. Call to confirm hours.
- Mail a check to the church. The mailing address is "Advent Lutheran Church, PO Box 840, Richboro, PA 18954"
- Contribute online at [www.adventrichboro.org](http://www.adventrichboro.org). At the top of the page, click the "Give Now" link to see frequently asked questions. At the bottom of the page click the "Give Now" link for our Giving platform. You may also choose to set up recurring donations or a one-time donation.

Again, thank you for your continued support. If you have any questions concerning your offering please call Cindy Frey, Financial Secretary 267-205-0713

## **SERVING IN WORSHIP - FEBRUARY'S SCHEDULE**

### **WORSHIP ASSISTANTS – 8:00 AM**

2/6 Jeanne Gryszka  
2/13 Dave Shearer  
2/20 Nancy Hill  
2/27 1 service 9:00 a.m.

### **WORSHIP ASSISTANTS – 9:30 A.M.**

2/6 Karen Matlack  
2/13 Gail Oines  
2/20 Jennifer McQuiggan

### **WORSHIP ASSISTANT – 9:00 a.m.**

2/27 John Flint

### **ALTAR GUILD**

8:00 A.M. Hanna McCollum  
9:30 A.M. Karen Matlack, Gail Oines,  
Nancy Slight, Rhona Slawter

### **OUR TECH CREW**

Joel Denis, Mike Dettra, Karen Matlack, Tony  
Gryzka, Gary Zimmerman

### **FLOWER DISTRIBUTION**

Linda Brownlee, Audrey Savchuck, Nancy  
Slight, Rhona Slawter



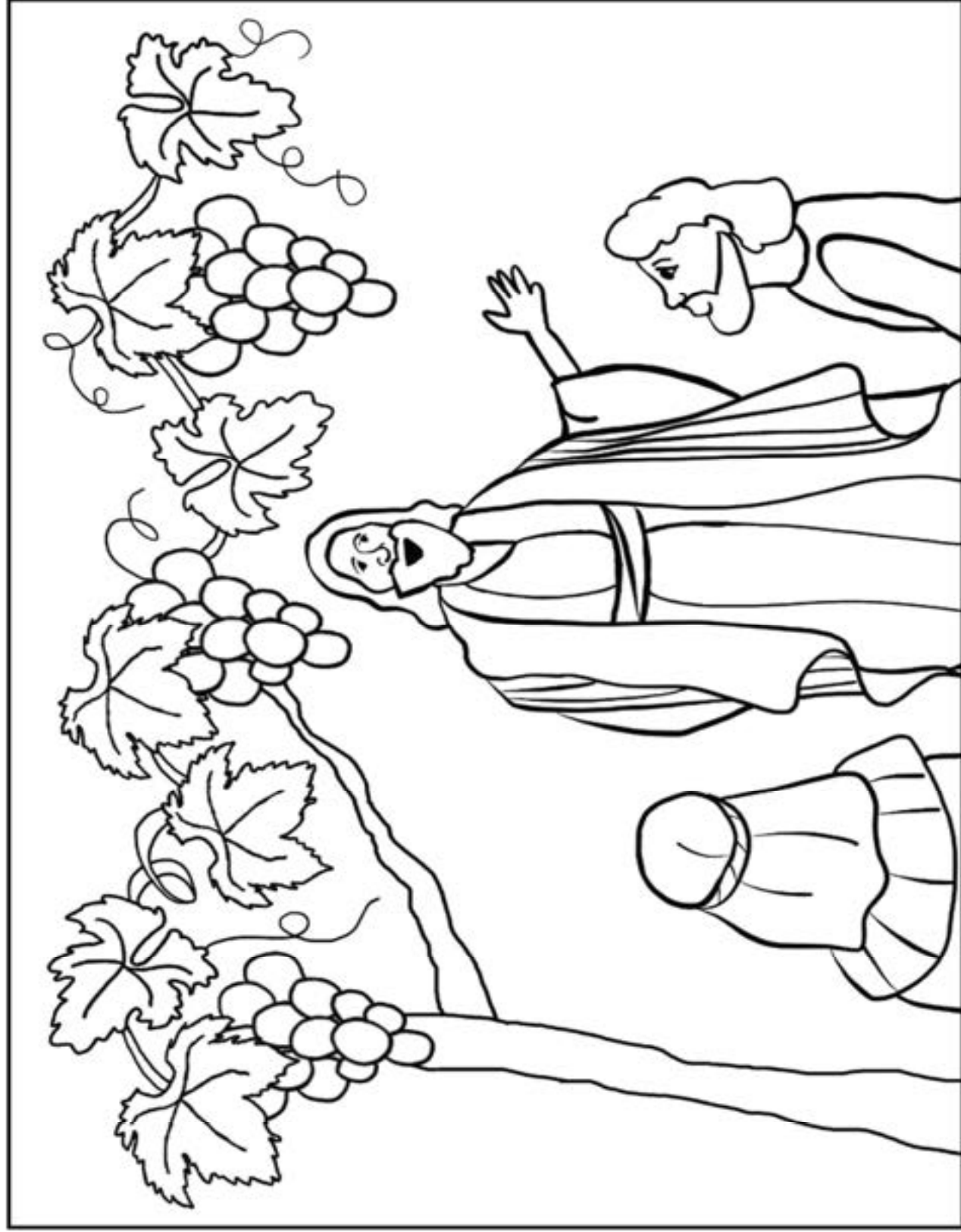
## **ADVENT'S BIRTHDAY CORNER** **FEBRUARY BIRTHDAYS**



5	Mike Sitler	9	Marion Schmidt	18	Julianna Ward
6	Stephanie Morley	13	Nicole Shearer	19	Kali (Frey) Marino
9	David Frost	15	Jacob Duffy	24	Stephen Anderson

Please contact the church office if you or someone you know has been omitted from the list.

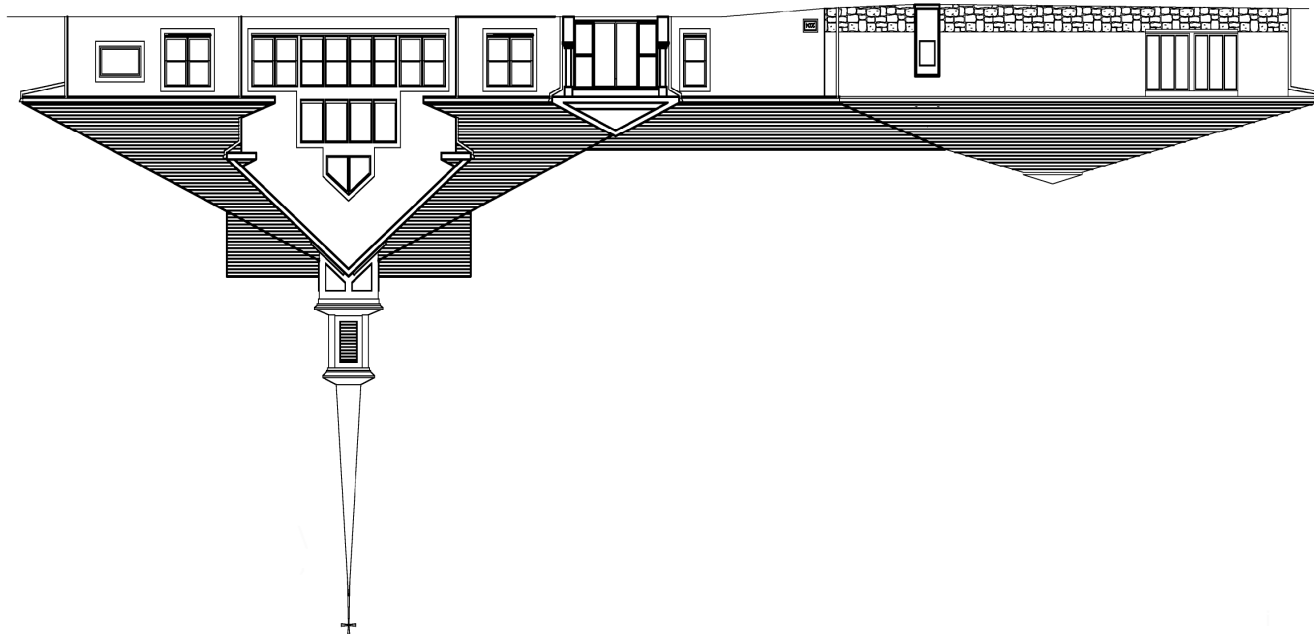
Thank you.



I Am the True Vine

# February

Sunday	Monday	Tuesday	Wednesday	Thursday	Friday	Saturday
		1 6:30 PM Ping Pong	2 7:00 PM Bible Study via Zoom	3	4 7:30 PM A.A. Step Mtg.	5 10:00 AM Stitch Club
6 <u>5<sup>th</sup> Sunday After Epiphany</u> 8:00 AM Traditional Holy Communion 9:00 AM Adult Bible Study 9:30 AM Contemporary Holy Communion 10:30 AM Fellowship Time: Jeanne Gryszka 10:45 AM Adult Bible Study	7 7:30 PM A.A. Open Meeting	8 6:30 PM Ping Pong	9 7:00 PM Bible Study via Zoom	10	11 7:30 PM A.A. Step Mtg.	12 8:30 AM Men's Breakfast 10:00 AM Stitch Club
13 <u>6<sup>th</sup> Sunday After Epiphany</u> <u>Souper Bowl of Caring</u> 8:00 AM Traditional Holy Communion 9:00 AM Adult Bible Study 9:30 AM Traditional Holy Communion 10:30 AM Fellowship Time: Open 10:45 AM Church Council Meeting	14 7:30 PM A.A. Open Meeting	15 6:30 PM Ping Pong	16 7:00 PM Bible Study via Zoom	17	18 7:30 PM A.A. Step Mtg.	19 10:00 AM Stitch Club
20 <u>7<sup>th</sup> Sunday After Epiphany</u> 8:00 AM Traditional Holy Communion 9:00 AM Adult Bible Study 9:30 AM Contemporary Holy Communion 10:30 AM Fellowship Time: Open 10:45 AM Adult Bible Study 6:30 PM Sunday School Class via Zoom	21 7:30 PM A.A. Open Meeting	22 6:30 PM Ping Pong	23 7:00 PM Bible Study via Zoom	24	25 7:30 PM A.A. Step Mtg.	26 10:00 AM Stitch Club
27 <u>Transfiguration of our Lord</u> 9:00 AM Blended Holy Communion 10:00 AM ANNUAL CONGREGATIONAL MEETING 6:30 PM Sunday School Class via Zoom	28 7:30 PM A.A. Open Meeting					



*Advent Evangelical Lutheran Church*

45 Worthington Mill Rd.

P.O. Box 840

Richboro, PA18954-0840

Address Service Requested